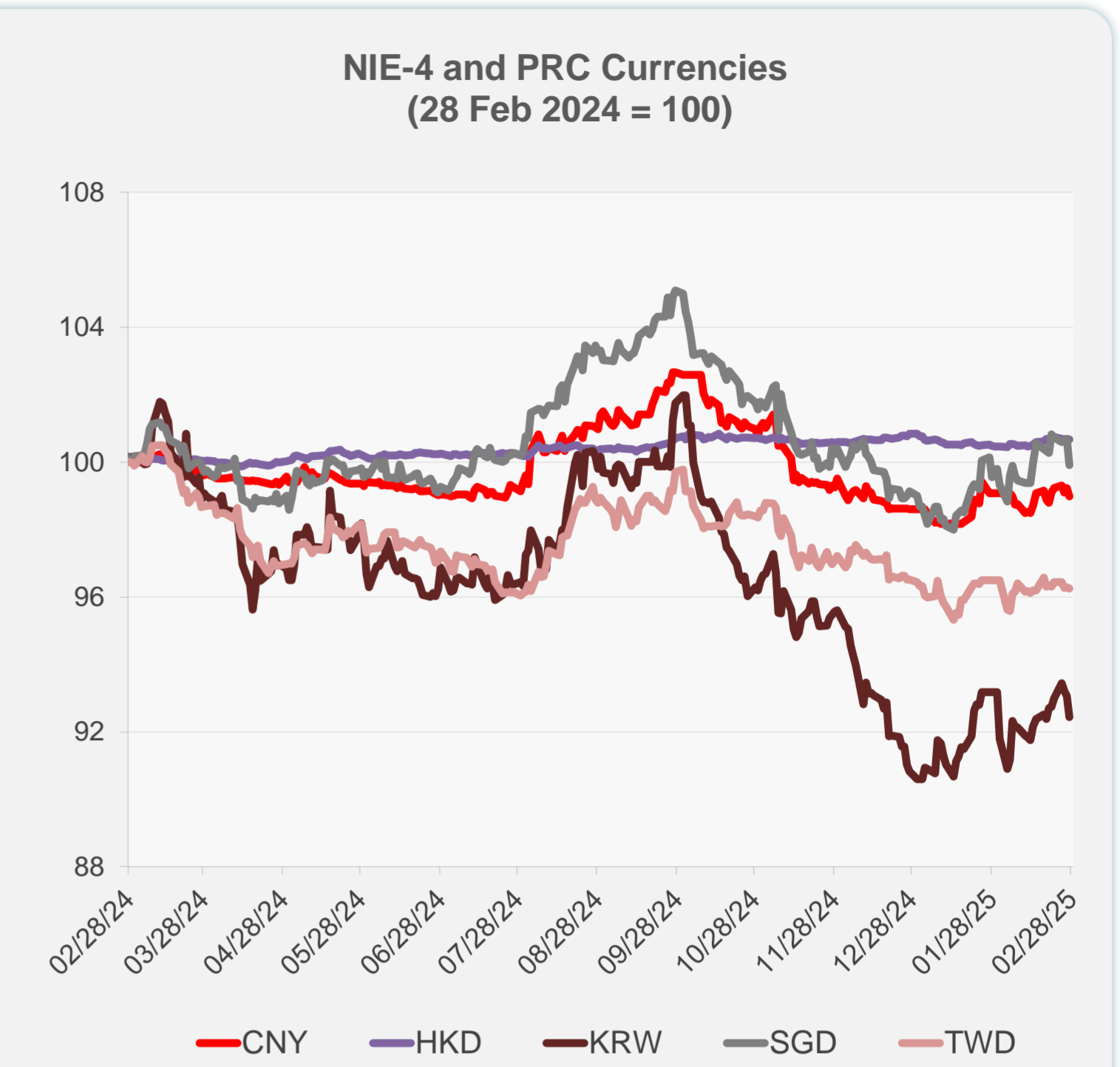
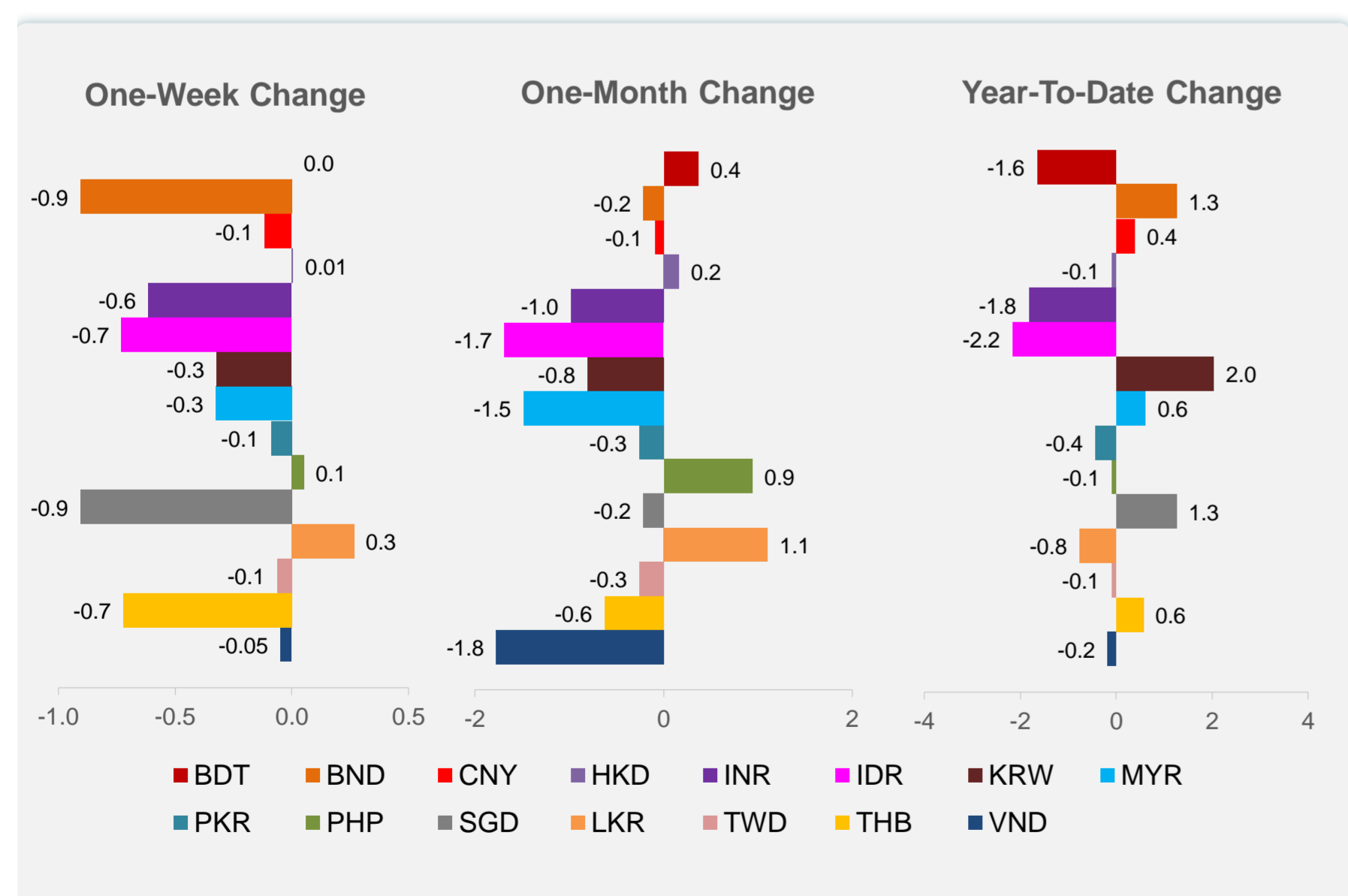
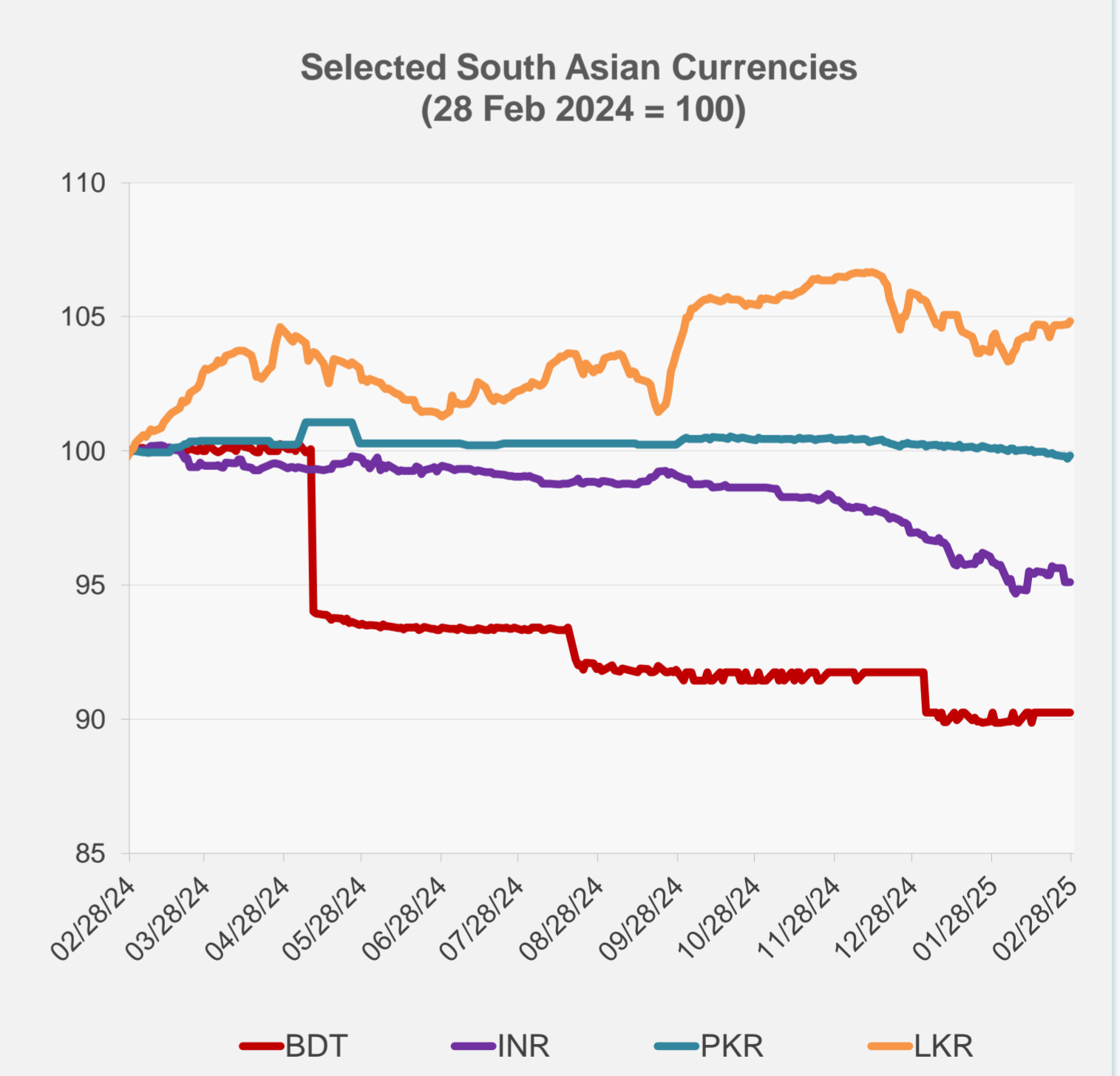
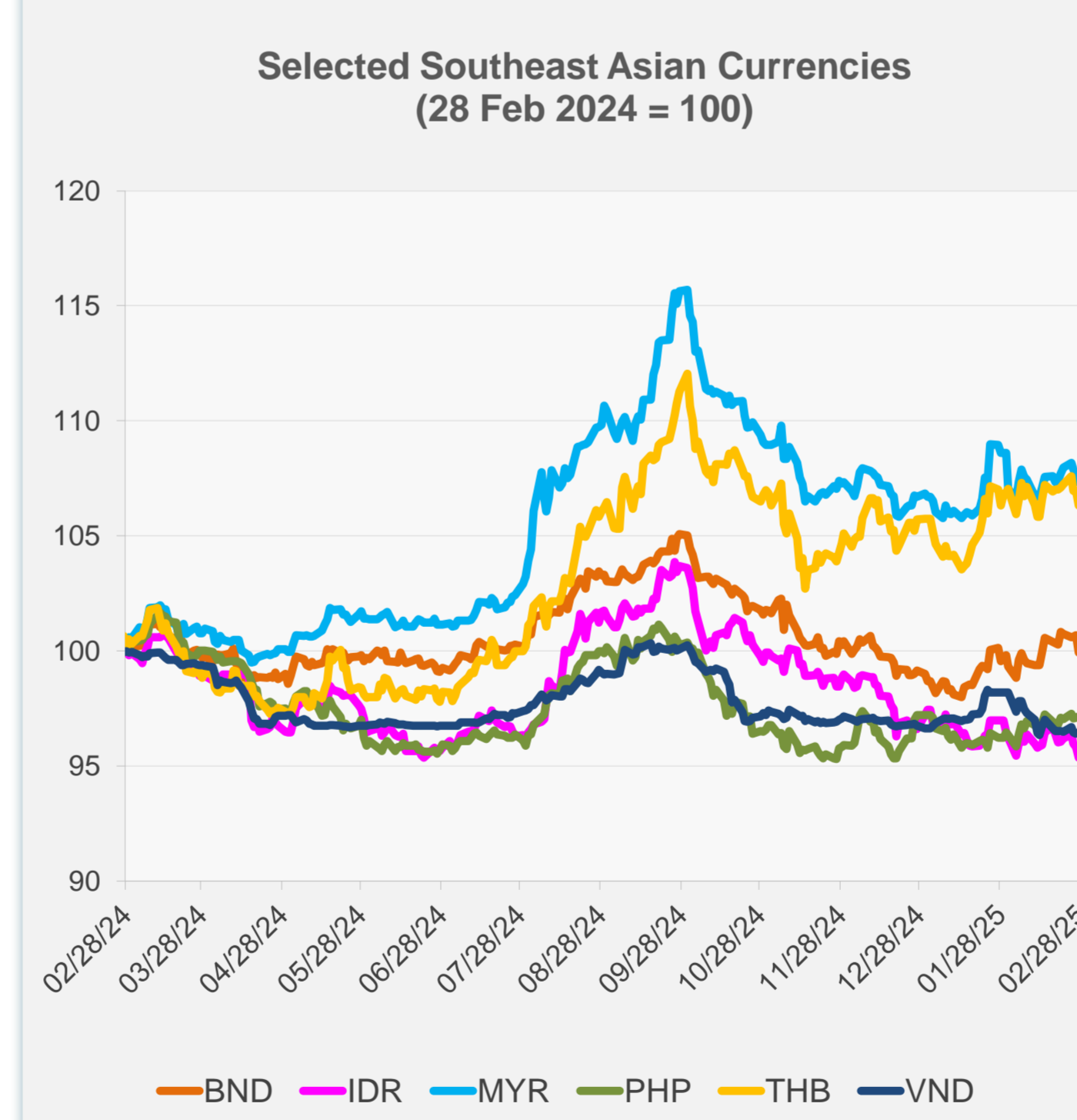


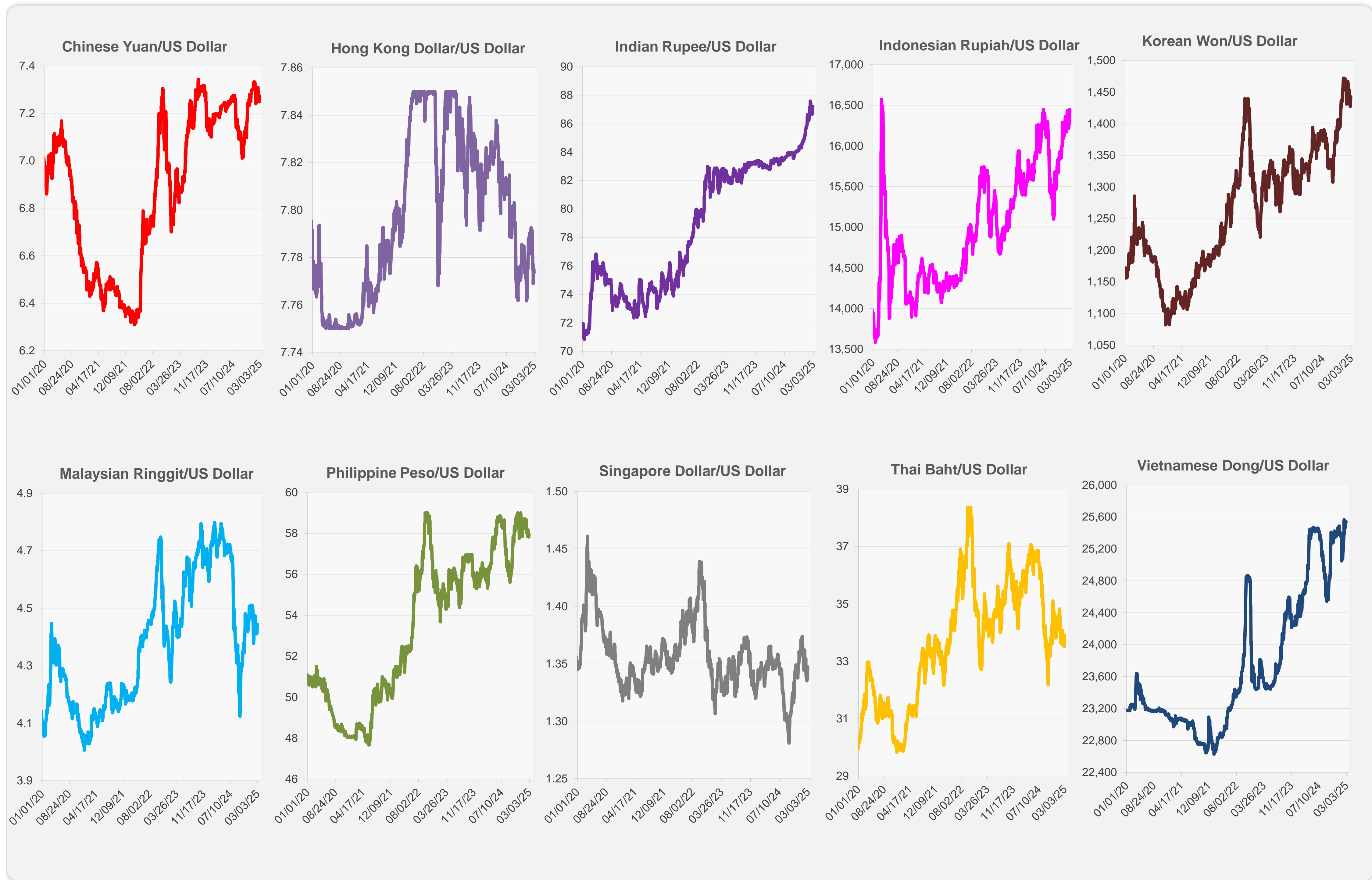
	Latest Closing	% change from Previous Day	% change from 01-Jan-25
Euro	0.96	-0.89	0.56
Japanese yen (JPY)	149.97	-0.31	4.80
Bangladeshi taka (BDT)	121.50	0.00	-1.65
Brunei dollar (BND)	1.35	-0.77	1.25
Chinese yuan (CNY)	7.27	-0.24	0.38
Hong Kong dollar (HKD)	7.78	-0.02	-0.09
Indian rupee (INR)	87.20	0.01	-1.82
Indonesian rupiah (IDR)	16,450.00	-0.49	-2.16
Korean won (KRW)	1,442.80	-0.68	2.03
Malaysian ringgit (MYR)	4.44	-0.35	0.61
Pakistan rupee (PKR)	279.58	0.11	-0.43
Philippine peso (PHP)	57.89	0.03	-0.08
Singapore dollar (SGD)	1.35	-0.77	1.25
Sri Lanka rupee (LKR)	295.24	0.12	-0.76
Taipei,China NT dollar (TWD)	32.81	-0.04	-0.09
Thai baht (THB)	33.91	-0.59	0.56
Vietnamese dong (VND)	25,530.50	0.06	-0.18



NIE = Newly Industrialized Economies



Note: Negative/Decreasing values indicate depreciation of local currency, and positive/increasing values indicate appreciation.  
Source: ADB calculations using data from Haver Analytics.

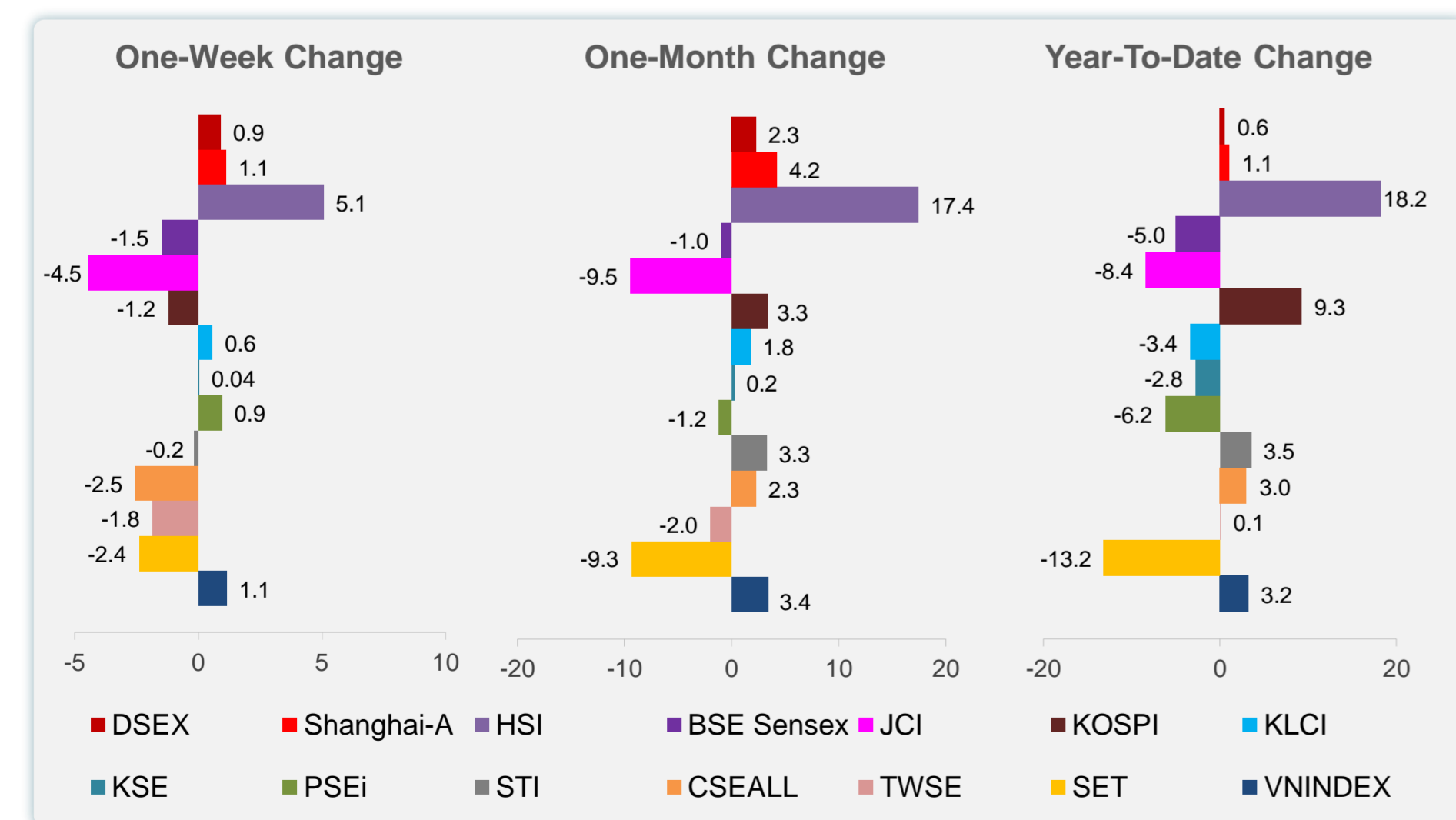
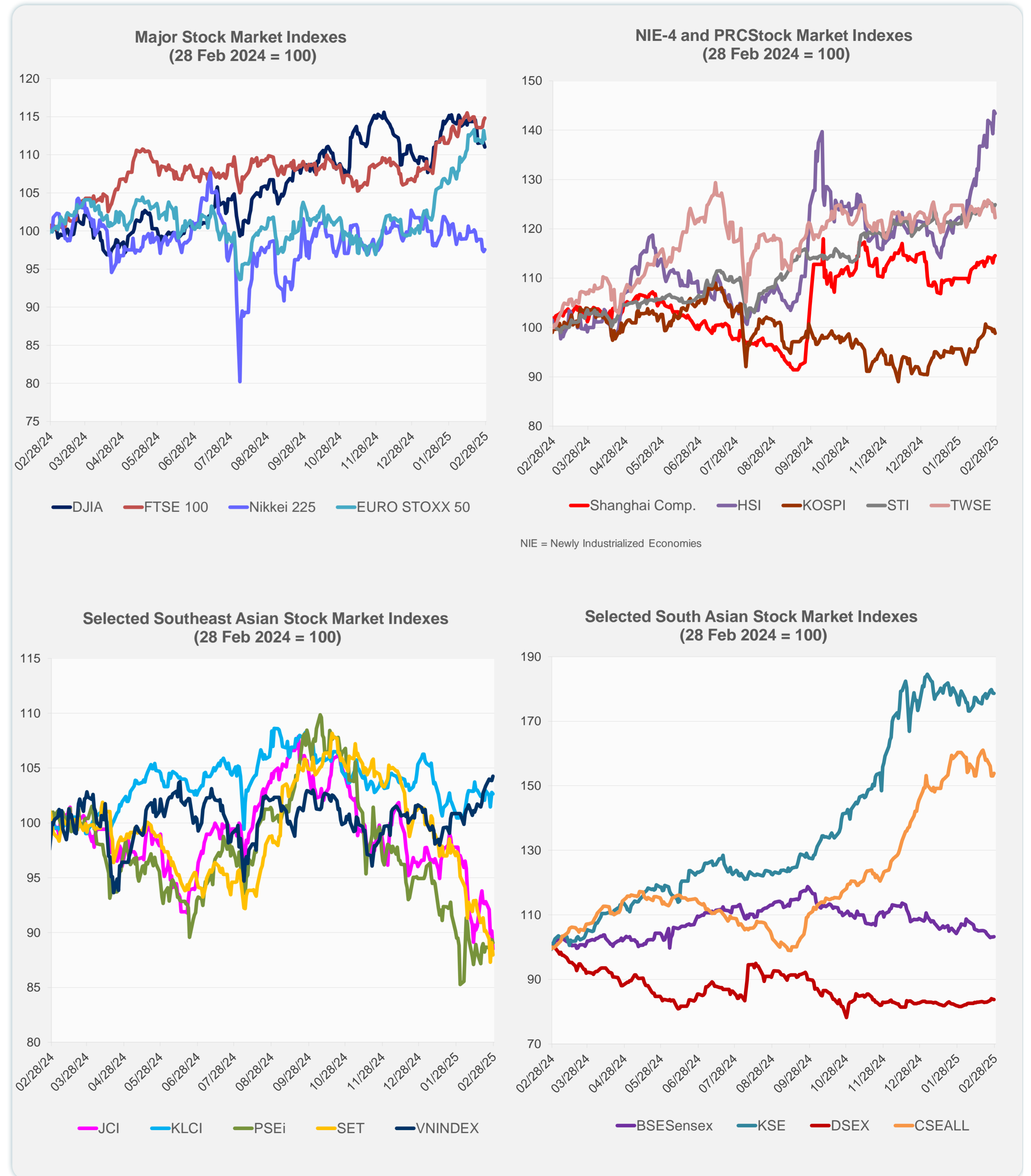


Source: Haver Analytics.

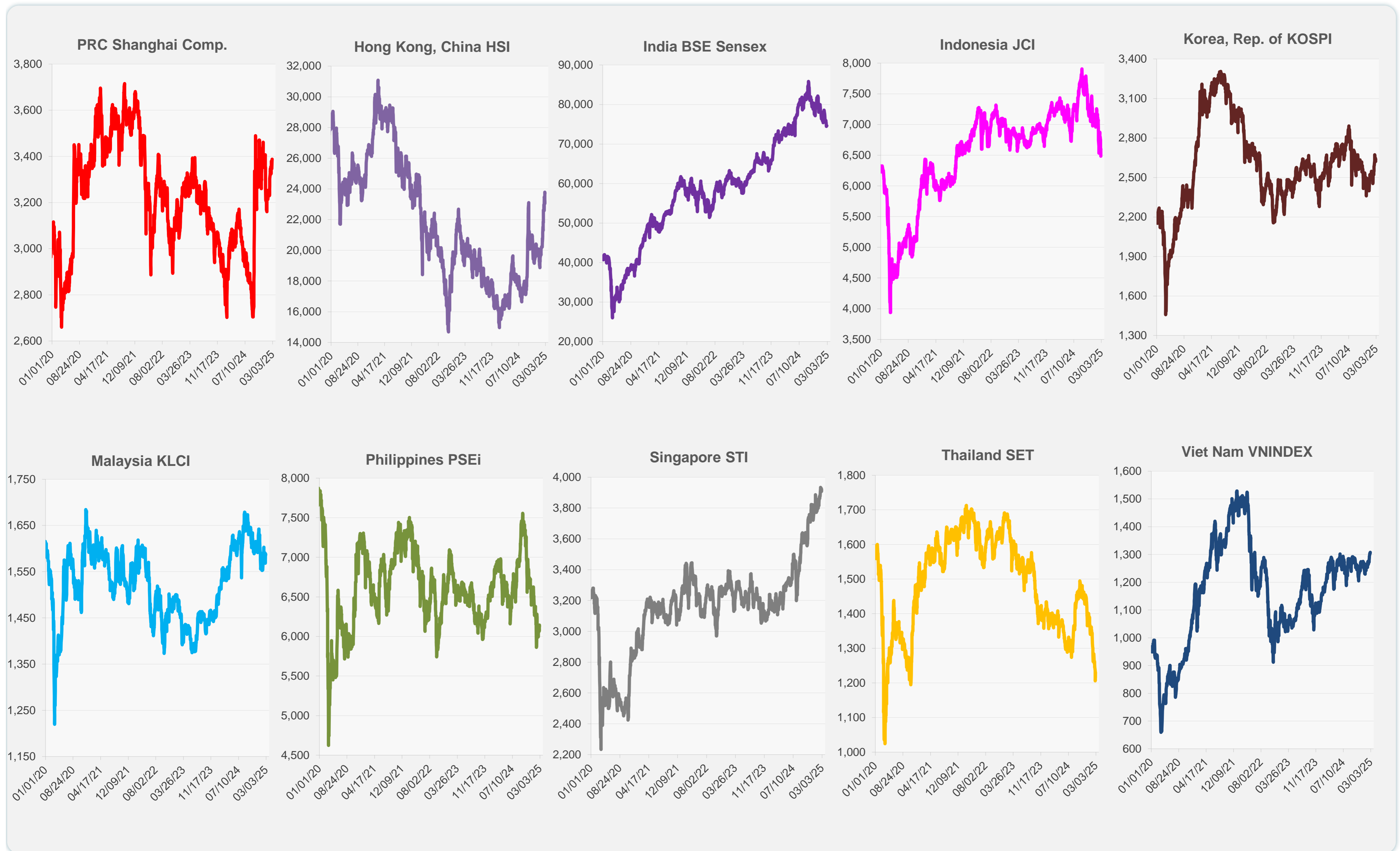
# Daily Market Watch STOCK INDEXES

28 February 2025, 9:00 AM Manila

	Latest Closing	% change from Previous Day	% change from 01-Jan-25
US Dow Jones Ind Avg	43,239.50	-0.45	1.63
US NASDAQ	18,544.42	-2.78	-3.97
US S&P 500	5,861.57	-1.59	-0.34
UK FTSE 100	8,756.21	0.28	7.14
EURO STOXX 50	5,472.56	-1.00	11.78
Japan NIKKEI 225	38,256.17	0.30	-4.11
Bangladesh DSEX	5,247.30	-0.12	0.56
PRC Shanghai Comp.	3,388.06	0.23	1.08
Hong Kong, China HSI	23,718.29	-0.29	18.24
India BSE Sensex	74,612.43	0.01	-4.96
Indonesia JCI	6,485.45	-1.83	-8.40
Korea, Rep. of KOSPI	2,621.75	-0.73	9.26
Malaysia KLCI	1,586.60	-0.13	-3.39
Pakistan KSE 100	113,784.30	-0.07	-2.76
Philippines PSEi	6,124.09	-0.34	-6.20
Singapore STI	3,921.19	0.34	3.53
Sri Lanka CSEALL	16,430.77	0.52	3.05
Taipei, China TWSE	23,053.18	-1.49	0.08
Thailand SET	1,215.73	-1.25	-13.18
Viet Nam VNINDEX	1,307.80	0.37	3.24



Sources: ADB calculations using data from CEIC Data Company and Haver Analytics.



Sources: CEIC Data Company and Haver Analytics.

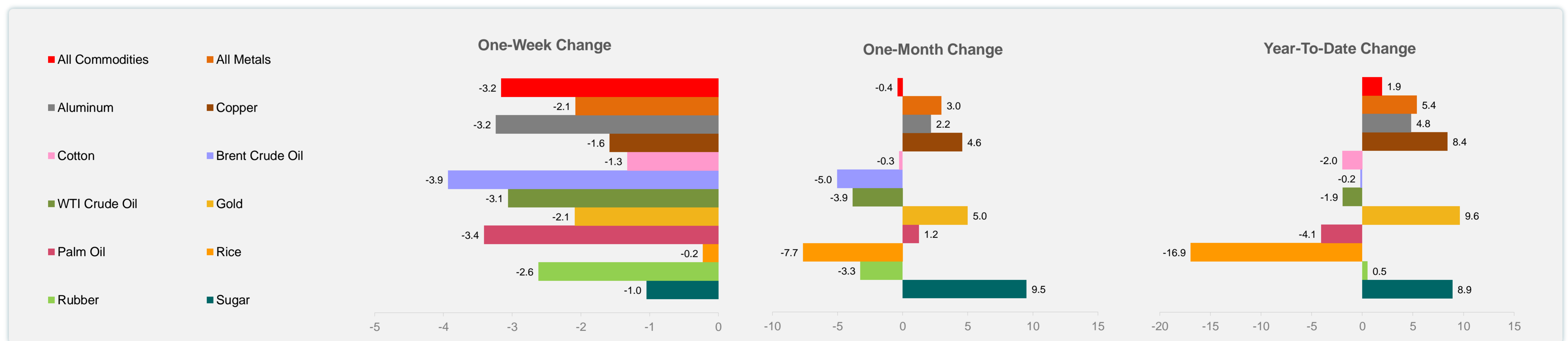
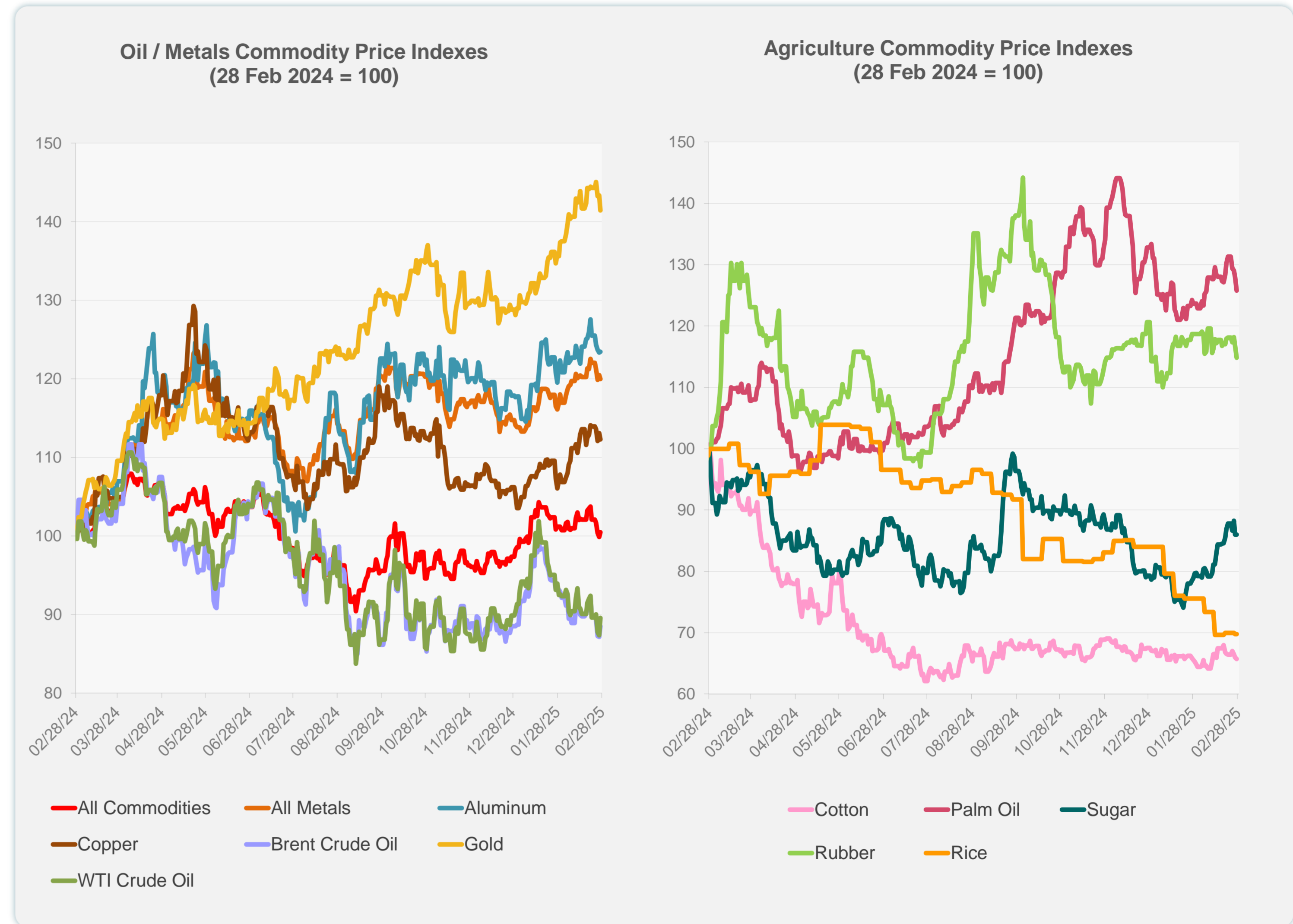
Daily Market Watch  
**COMMODITY PRICES**

28 February 2025, 9:00 AM Manila

	Unit	Latest Closing	% change from Previous Day	% change from 01-Jan-25
S&P All Commodities	US\$	560.28	0.57	1.93
S&P All Metals	US\$	323.94	-0.43	5.39
Aluminum	US\$/metric ton	2,648.87	0.10	4.83
Copper	US\$/metric ton	9,381.31	-0.71	8.42
Cotton	US cents/lb	64.60	-0.42	-1.97
Brent Crude Oil	US\$/barrel	73.97	1.56	-0.18
WTI Crude Oil	US\$/barrel	70.35	2.52	-1.91
Gold	US\$/troy oz	2,877.52	-1.33	9.64
Palm Oil	US\$/metric tonne	1,055.51	-1.73	-4.06
Rice <sup>1</sup>	US\$/metric ton	446.00	0.00	-16.95
Rubber <sup>2</sup>	US\$/kg	238.00	-1.65	0.51
Sugar	US cents/lb	19.82	0.00	8.90

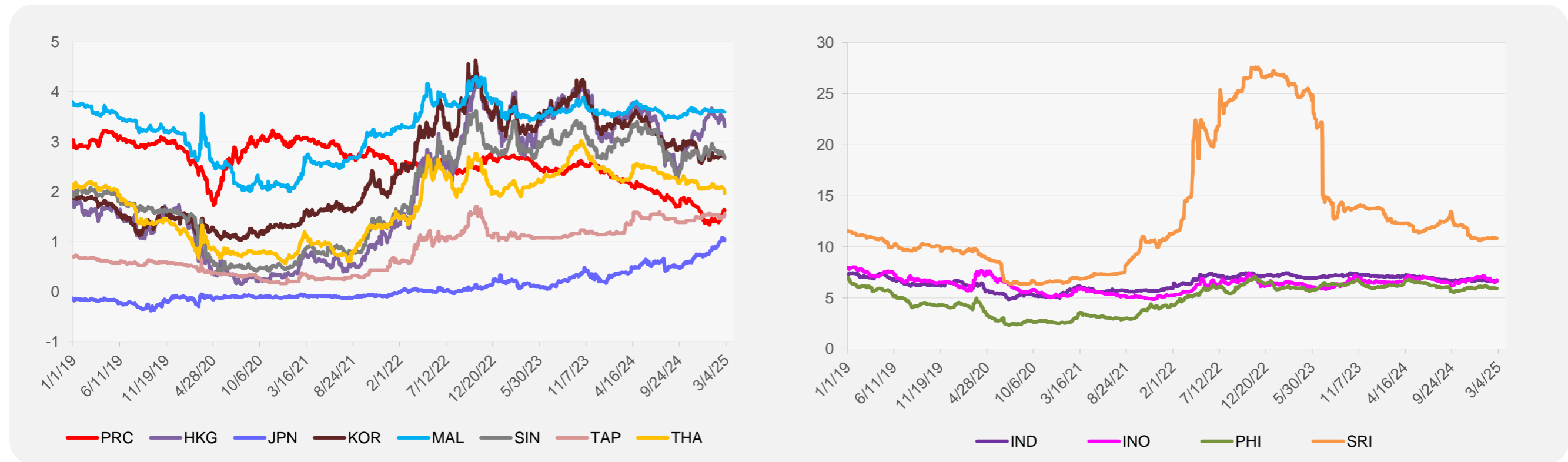
<sup>1</sup> Latest closing price from 26 February 2025.

<sup>2</sup> Singapore Exchange, Ribbed Smoked Sheet Rubber.

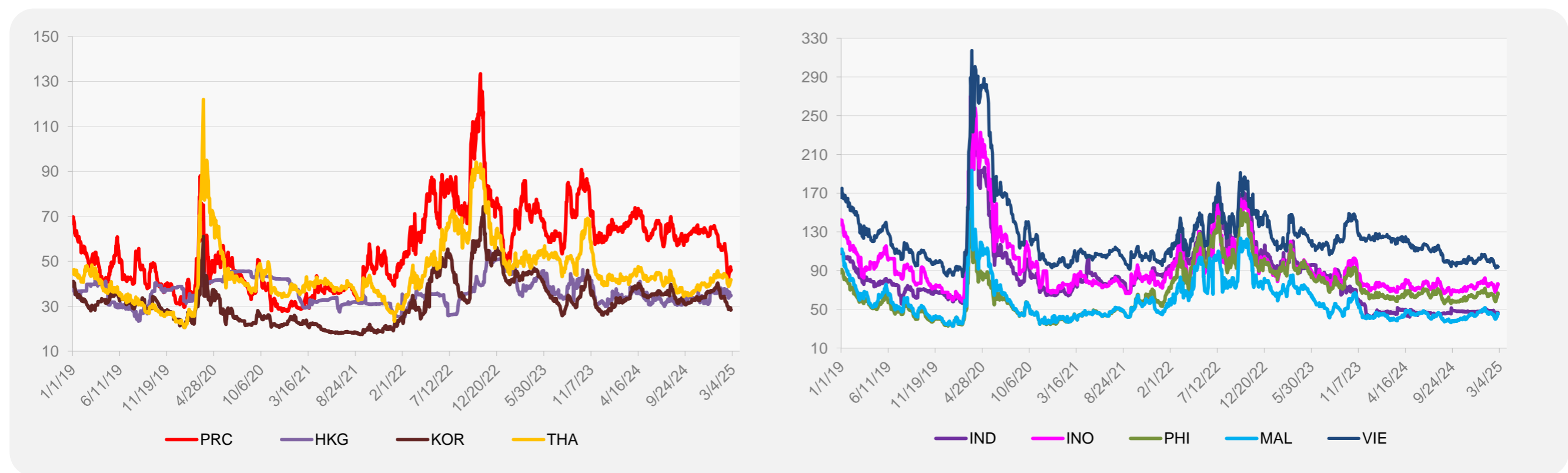


Source: ADB calculations using data from Bloomberg.

### 5-YEAR LOCAL CURRENCY GOVERNMENT BOND YIELDS (%)



### 5-YEAR CREDIT DEFAULT SWAP<sup>1</sup>



<sup>1</sup> In USD and based on sovereign bonds.  
Source: ADB calculations using data from Bloomberg.